

YOUR ACCESS CONTROL YOUR CHOICE OF DEVICE

Navigator IP is a fully featured Two Door Access Control Unit supplied boxed with integral 12v DC 2.5A lock power supply

Simply connect your Navigator IP Door Controller directly to your PC / Laptop or via your Local Area Network (LAN) for additional Tablet and Smartphone wireless connectivity ¹

Browser-based with in built Web Server (not cloud)
No Internet connection required ²
PC, Laptop, Tablet or Smartphone compatible
Easy setup with no software installation required
Full Door Control with Event and Report analysis
Up to 200 doors & 10,000 users (2 doors per controller)
Multiple Door Groups, Time Zones & User Categories
Assisted Access / DDA Automatic Door Control
Email System: Alerts /Events /Break Glass monitoring
Battery Status Alerts with auto test & notification
Automatic Events Backup by Email Feature
Mini Events Windows & Live icon feedback
Cause & Effect Relationships
Full Database Import / Backup / Restore
Complete with a 12v DC 4.3A power supply
Standalone or networked via RS485 and / or Ethernet
Supports most popular Reader Technologies
Flash Upgradeable Firmware



Designed, Manufactured and Supported in Great Britain by JWS



125 kHz & Mifare Readers, Cards and Fobs available

www.navip.co.uk

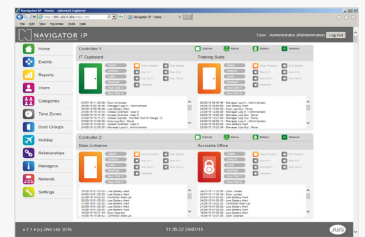


Embedded firmware built-in means no software purchase, installation, renewal, license or internet connection required!

Features Include:

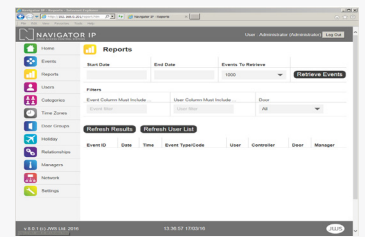
HOMEPAGE

Live Door and Controller feedback with on-screen Door and Auxiliary control.



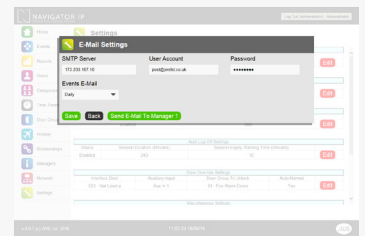
REPORTS

Generate User Activity reports and download them to your favourite spreadsheet application



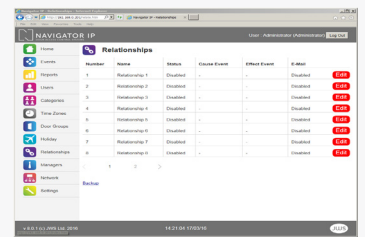
EVENTS

Keep up to date with System and User events as they happen via email ² or text ³



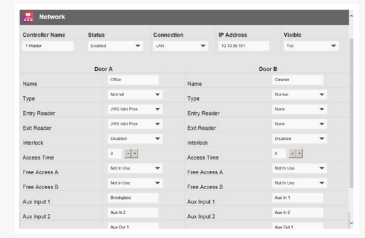
RELATIONSHIPS

Cause & Effect software e.g. send an email when a Breakglass is used or a door left open



DDA ASSISTED ACCESS

Unlock and impulse an Automatic Door operator (4 settings with time delay and exit control)



SPECIFICATIONS

ELECTRICAL	
Input Voltage	12v 4.3A (via Switch Mode PSU supplied)
PCB Current Consumption	250mA
Lock Supply	12v DC 2.5A (2 x 1.25A per controller)
On board Battery Charge Circuit	Yes: Battery Status Alerts with automatic test and notification
Doors per Access Control Unit or ACU)	2
Max Doors per Network	200 (100 Controllers)
Number of card holders	1,000 (Standard) and 10,000 (Enterprise Version)
Block Programming via Site Codes	Yes
Readers per controller	4 (1x Entry / 1 Exit per door)
User Categories, Door Groups, Time zones	64
Managers	16
Relationships (Cause & Effect I/O)	16
Holidays	32
Number of events stored on Master (Backup manually and/or by Automated Scheduled emails)	50,000
Data retention during power loss	One year
DDA Assisted Access	Normal + 4 x Auto Door Impulse / Delay Settings
Full Database Import / Backup / Restore	Navigator IP CSV (Microsoft Excel, Numbers etc.)
READER COMPATIBILITY	
Clock & Data	Entry and Exit
Wiegand	Entry only
Other Reader Types	Most popular reader technologies
INPUTS AND OUTPUTS	
Lock Relay (1 per door)	Isolated 10A compatible with Fail Safe and Fail Secure locking devices
Aux Relay (2 per door)	1A Isolated with C, NO & NC contacts
Aux Inputs	Two per door (4 per controller)
RTE Exit button inputs	Yes
Door contact / Monitored Lock inputs	Yes
Monitored Break Glass inputs	Yes
Cabinet Tamper	Yes (Optical)
Interlock	Yes
Automatic Daylight Saving	Yes
Battery Self-Test	Yes (Daily or None)
Mains Monitoring	Yes
CONNECTIVITY	
Master (with built in Web Server)	IP (Static IP recommended but DHCP is supported). Internet connection not required
LAN SLAVE	LAN (UDP with Static IP or DHCP)
485 SLAVE	485 (wired via the Master)
Flash upgrade of units	Yes (Master and LAN Slaves)

PCB DIMENSIONS FOR EASY UPGRADE

The Navigator IP PCB is the same size as the M5, S1 and Sprint PCB at 168 x 125 mm. This allows utilisation of the existing cabinet if required.

CABINET

Height 280mm (h) x 230 mm (w) x 85mm (Inc. mounting feet).
Allows fitment of 12vDC 7.0Ahr Sealed Lead Acid battery.



ALSO AVAILABLE



JWSECOPROX



JWSSGPROX



JWSSWIPE



JWSMINIPROX



JWSLRPROX



CARDS AND FOBs



JWSMFPROX



JWSPROXAUDIO