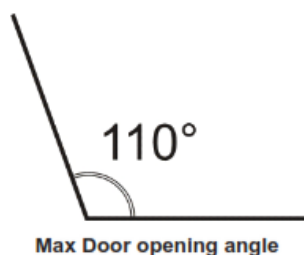


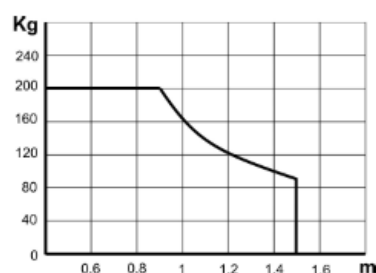
Digiway SR Suitability of Installation Questionnaire

1. Is the door width 1.5m or less? (please see use conditions below)
2. Is the door under 200kg? (please see use conditions below)
3. Can the door swing freely, i.e. no closing system in the frame, floor or jamb. No detents (hold open device)?
4. Is there a 100mm header above the door?
5. If inward opening is the door face flush to the header i.e. the door is not recessed?
6. If outward opening is the reveal depth 300mm* or less?
7. If outward opening is depth of door below opener 95mm or less? (40mm without extender)

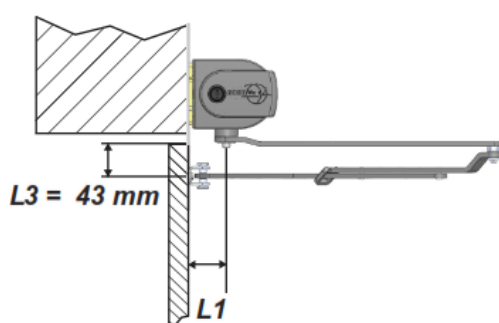
If the answers are all yes, then the Digiway SR will fit.



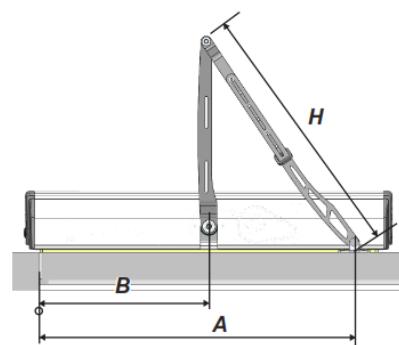
• Use conditions



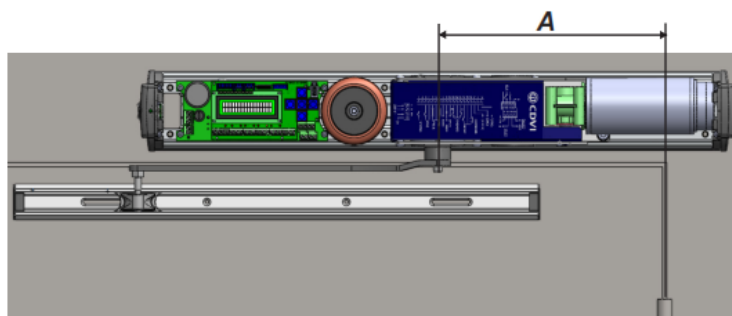
*Articulated Installation Dimensions:



B = 330 mm		
L1	A	H
300	540	600
270	500	570
240	500	570
210	500	540
180	500	520
150	460	460
120	460	450
90	500	430



Sliding Arm Installation Dimensions:



Parameter	Value (mm)	Description
A	280	Door hinge – motor axis distance
B	35	Backplate – guide distance