

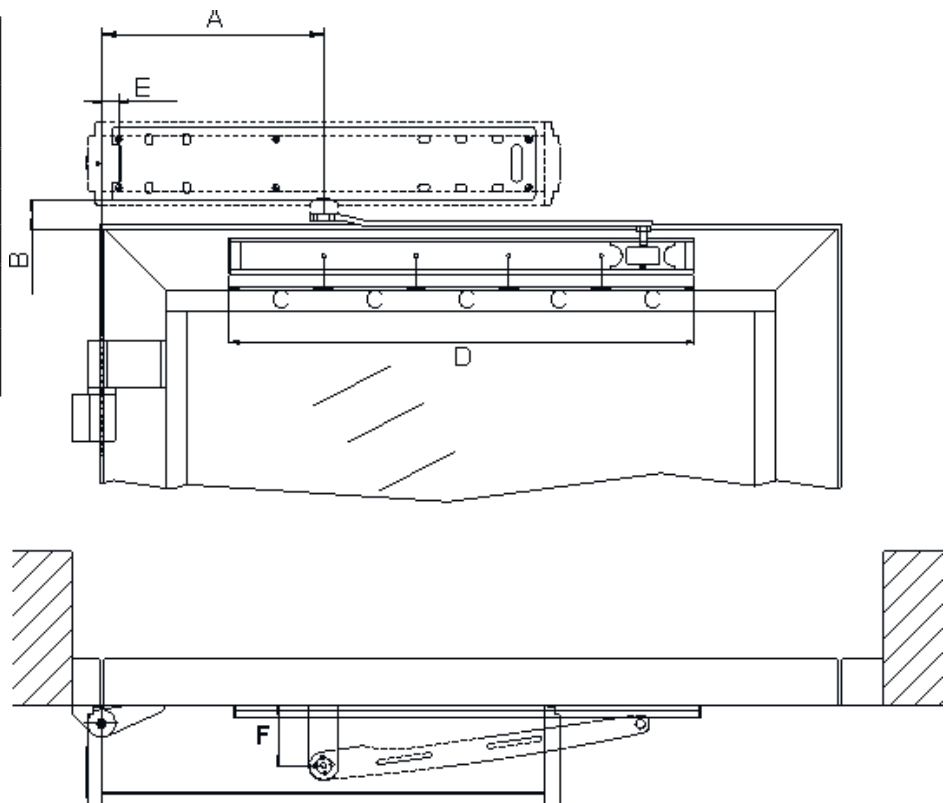
Installation

First of all, check the stability of the door which has to be motorized, verifying that regularity of the motion in both directions (open and close) is without any friction from the complete close to the complete open status. If this is not the case, make necessary improvements to the structure. Remove any manually operated lock (eg. requiring a physical lowering of the handle to open the door).

Digiway plus does not need a door-stop fitted to complete the open cycle. Make sure any closing device is completely removed including hydraulic devices, turn to free or minimum is not sufficient.

Sliding arm version

Parameter	Value (mm)	Description
A	240	Door hinge – motor axis distance
B	35	Backplate – guide distance
C	100	Motor axis - guide edge
D	500	Guide width
E	18,5	Distance hinges - back-plate hole
F	70,5	Motor axis - vertical plane distance



This type of installation is addressed to inswing doors.

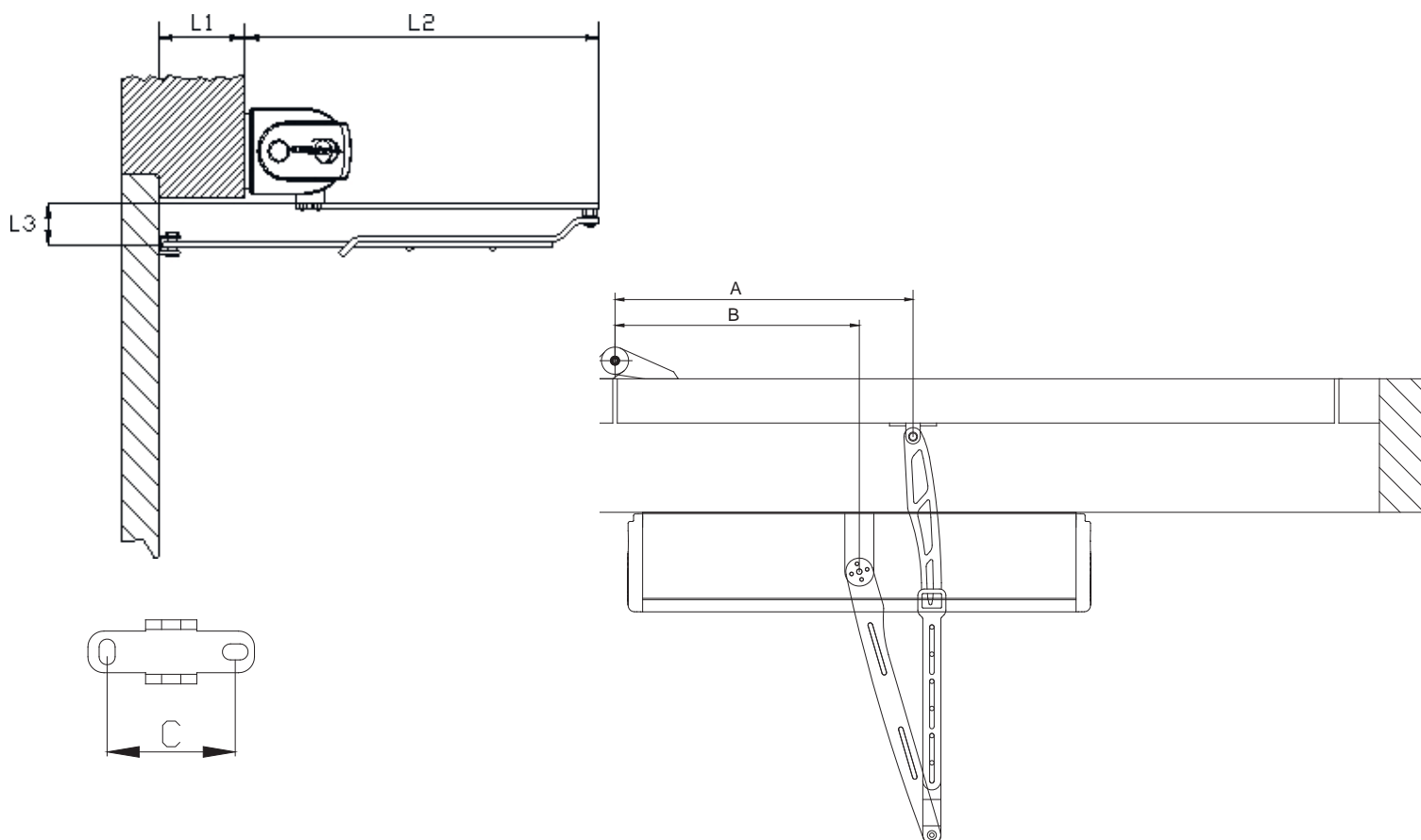
- 1) Identify the dimensions of the motor, locate the fixing position, the holes for the cables and the 6 fixing holes making use of the mounting template provided;
- 2) Check the feasibility of the guide fixing, respecting the distance to the motor;
- 3) Make 6 holes diameter \varnothing 8 mm and insert the 6 special plugs provided ;
- 4) Fix the plate to the wall using the special screws provided;
- 5) Fix the motor to the mounting plate with the screws M6x14 provided;
- 6) Plug-in the sliding arm on the motor shaft and screw the fixing screw M6;
- 7) Slide-in the sliding block into the guide;
- 8) Offer the guide to the door and mark the 4 fixing holes;
- 9) Remove the sliding block and fix the guide to the door by using the 4 special screws provided;
- 10) Slide-in completely the white strip on the guide;
- 11) Slide-in the sliding block into the guide and insert the two lateral plugs;
- 12) Check full free movement whilst in free mode.
- 13) Make all the electrical connections;
- 14) Apply power;
- 15) Follow the procedure : «Getting started»;
- 16) Connect the Ground wire to the cover terminal and fix the cover.

DIGIWAY PLUS

Articulated arm version

This part is addressed to outward door installations

- 1) Identify the dimensions of the motor, locate the fixing position, the holes for the cables and the 6 fixing holes making use of the mounting template provided;
- 2) Make sure that the bracket of the articulated arm falls in the right position;
- 3) Make 6 holes diameter Ø 8 mm and insert the 6 special plugs provided ;
- 4) Fix the plate to the wall using the special screws provided;
- 5) Fix the motor to the mounting plate with the screws M6x14 provided;
- 6) Fix the bracket to the door referring to the distance A of the table below;
- 7) Plug in the articulated arm on the motor shaft and screw the fixing screw M6;
- 8) If the distance between the motor and the door is higher than that allowed, use the extension (optional);
- 9) Fix the arm to the motor by using the screw M6x14 or M6x70 provided;
- 10) Check full free movement whilst in free mode;
- 11) Make all the electrical connections;
- 12) Apply power;
- 13) Follow the procedure : «Getting started»;
- 14) Connect the Ground wire to the cover terminal and fix the cover.



Parameter	Speed	Power	Description
	(mm)	(mm)	
A	410	430	Door hinge – door bracket distance
B	270	360	Door hinge – motor axis distance
A - B	140	70	Motor axis – door bracket distance
C	40		Bracket holes distance
L1	55 - 195		Door jamb width
L2	371		Distance wall - articulation
L3	43		Distance motor shaft-door bracket